



Helios Tube is an RGB - Amber - Mint LED lighting Tube that has all the features of the popular Titan Tube while offering a smaller format. It allows mounting in areas where a Titan Tube wouldn't fit and also increases portability. This LED lighting Tube has 8 pixels, half the brightness of the Titan tube and just over half its length. Colors and brightness are perfectly matched to those of the Titan Tube's.



Max 20h



Wireless DMX



IP65



App

## SPECIFICATIONS

Please note that due to a component shortage we had to do internal changes to Helios Tube and units manufactured after September 2021 have the BTB feature built-in and are now called FP2-BTB.

	Helios Tube	Helios Tube BTB
Order Code	FP2	FP2-BTB
LED Engine	Titan LED Engine	
Colors	RGBMintAmber	
Total LED Power	36 W	
LED Power Draw	24 W	
Luminous Flux 3200 K	1 285 Lumens	
Luminous Flux 4000 K	1 340 Lumens	
Light Output 3200 K @ 1 m	360 Lux	
Light Output 4000 K @ 1 m	393 Lux	
CRI (Ra)/ TLCI 3200 - 6500 K*	≥96	
Beam Angle	135° x 115°	
Field Angle	175° x 160°	
Strobe	0 - 25 Hertz	
Pixels	8	
Battery Runtime	up to 20 hours	
Battery Lifetime	70 % after 300 cycles	
Charging Time (nominal)	3 hours	
DC Input	24 VDC - 1.25 A	
DC Connector	5.5 mm x 2.1 mm	
Wired DMX	Yes (via FP1-PWB / FP3-DTL / PWB-2-86)	
CRMX Receiver	Built-in	
BluetoothBridge BTB	No	Built-in
Wireless Protocols	CRMX, UHF	CRMX, UHF, Bluetooth, WiFi
Wireless Range	CRMX/UHF up to 300 m / 330 yds	CRMX/UHF up to 300 m / 330 yds Bluetooth up to 3 m / 3.3 yds
Infrared Control	Yes	
Housing Material	Polycarbonate, metal end caps	
IP Rating	IP65 (only with FP1-SP)	

Ambient Operating Temperature	0 - 40 °C / 32 - 104 °F
Weight	0.765 kg / 1.68 lbs
Dimensions	550 mm x Ø 43 mm / 21.7" x Ø 1.7"
Mounting Options	2x M5 thread, 2x TubeHolder (with 2x M5 and 1x 1/4" - 20 UNC thread), 1x TubeStand

\*Typical value

## RF CHARACTERISTICS FP2

Wireless Modules	EU: UHF*** (863-870MHz)	USA: UHF (917-922.20MHz)	AUS: UHF (922.30-927.50MHz)	SGP: UHF (920.50-924.50MHz)	KOR: UHF (917.9-921.5MHz)
Modulation	FHSS	FHSS	FHSS	FHSS	FHSS
ERP (Transmitter)	<25mW	<25mW	<25mW	<25mW	<25mW
Channel Count	47	53	53	41	10

Wireless Modules	RUS: UHF (868.75-869.12MHz)	JPN: UHF (922.80-926.40MHz)	CRMX (2402-2480MHz)
Modulation	FHSS	FHSS	FHSS
ERP (Transmitter)	<25mW	<25mW	-
Channel Count	6	19	79

\*\*\*General allocation of frequencies for use by short-range radio applications

## RF CHARACTERISTICS FP2-BTB



Wireless Modules	EU: UHF*** (863-870MHz)	USA: UHF (917-922.20MHz)	AUS: UHF (922.30-927.50MHz)	SGP: UHF (920.50-924.50MHz)	KOR: UHF (917.9-921.5MHz)
Modulation	FHSS	FHSS	FHSS	FHSS	FHSS
ERP (Transmitter)	<25mW	<25mW	<25mW	<25mW	<25mW
Channel Count	47	53	53	41	10

Wireless Modules	RUS: UHF (868.75-869.12MHz)	JPN: UHF (922.80-926.40MHz)	CRMX (2402-2480MHz)	Bluetooth 5.0 LE (2402-2480MHz)	WiFi (2412-2472MHz)
Modulation	FHSS	FHSS	FHSS	FHSS	DSSS, OFDM
ERP (Transmitter)	<25mW	<25mW	-	10mW (BLE)	<100mW
Channel Count	6	19	79	40	13

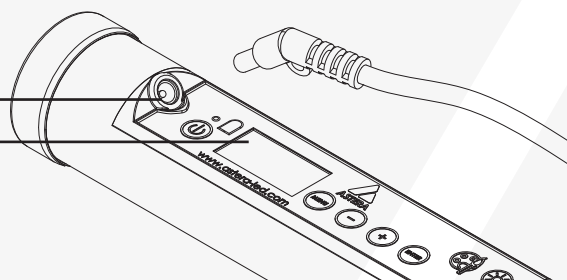
## DRAWINGS



## CONNECTIONS + DISPLAY

Wired Data Connection

Backside Display



# ACCESSORIES

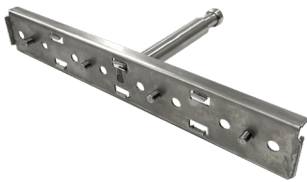
**TubeHolder**  
AX1-H



**WingPlate**  
AX1-WP



**CrossPlate**  
AX1-CP

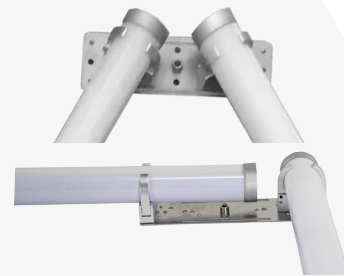
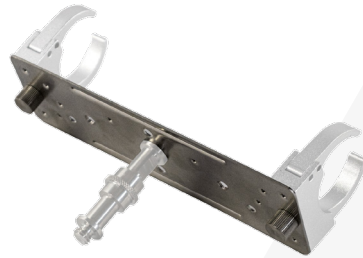


# FEATURES

Fix tubes via screws or BabyPin to walls and structures



Hang one Tube with BabyPin or connect several Tubes



Holds up to 4 Tubes



**BabyPin**  
FP1-BLT



**EyeBolt**  
FP1-EBLT



**Waterproof Protection Cover**  
FP1/2-SP



**Titan Power/Data Combination Cable**  
5/10/15 m

FP1-PWB-CAB-5/10/15



**Extension Cable for Helios, Titan, Hyperion Tube**  
5m

FP1-EXC



**Power Supply for Titan and Helios Tube**  
FP1-CHR



**TubeStand**  
AX1-STD



**Softbag for Helios Tube**  
FP2-SB



**Accessories by DoPchoice**  
**SNAPBAG 1 HELIOS TUBE**  
 SBAAT21



**SNAPBAG 3 HELIOS TUBES**  
 SBAAT22



**SNAPGRID 40° HELIOS**  
**Single Tube**  
 SGAT12W40



**Helios Tube Kit**  
 FP2-SET



Weight (empty): 15 kg / 33 lbs  
 Weight (full): 31 kg / 68.3 lbs

Dimensions  
 765 mm x 504 mm x 260 mm /  
 30.12" x 19.84" x 10.24"

Included in the Kit
8x FP2 HeliosTube (FP2)
1x PowerBox (FP1-PWB)
16x EyeBolts (FP1-EBLT)
16x Holder (AX1-H)
16x Babypin (AX1-BLT)
8x Stand (AX1-STD)
1x Charging Case for Helios Tube (FP2-CHRCSE)
1x PowerCON TRUE1 cable
8x DC Cables
8x Waterproof covers for charging port (FP1/2-SP)
<b>Optional: 8x WingPlates (AX1-WP)</b>

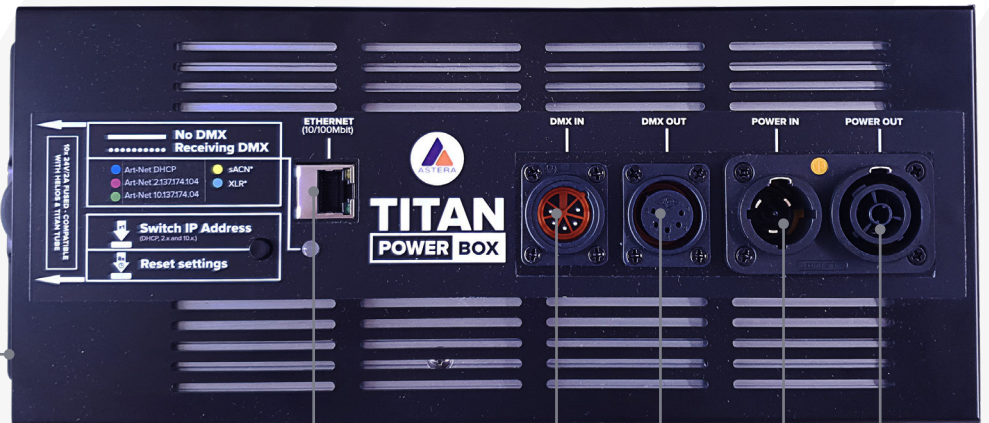
# CHARGING & CONNECTING

With Titan PowerBox (FP1-PWB)



Power/Data Cable

10 Sockets for DC Cables with Power + Data

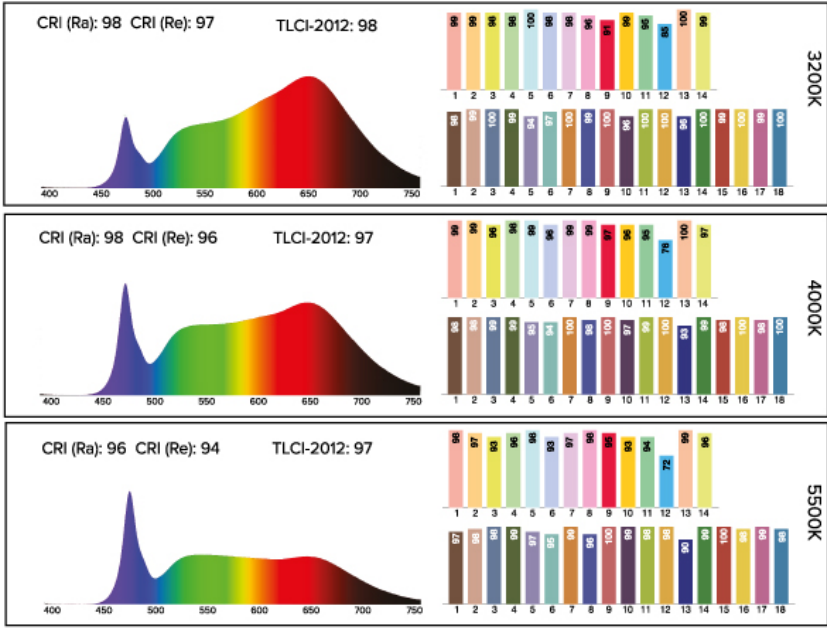


RJ45 Socket for Artnet or sACN

XLR DMX IN  
 XLR DMX OUT

AC power IN  
 AC power OUT

# TYPICAL SPECTRAS



Typical values